

Specification:

Current Rating : 1.5 Amp.
 Withstanding Voltage: AC 500V for 1 Minute.
 Insulation Resistance: 1000M OHM Min,at 500V DC.
 Contact Resistance: 30m ohm Max.
 Operating Temperature: -55°C~+105°C.

Material:

Insulator: PBT (UL94V-0).
 Shield Cover: Brass(T=0.25mm), Nickel Plated.
 Contact : Phosphor Bronze, Gold Flash & Tin Plated.
 Insulation Color: Black.

Mechanical Characteristics:

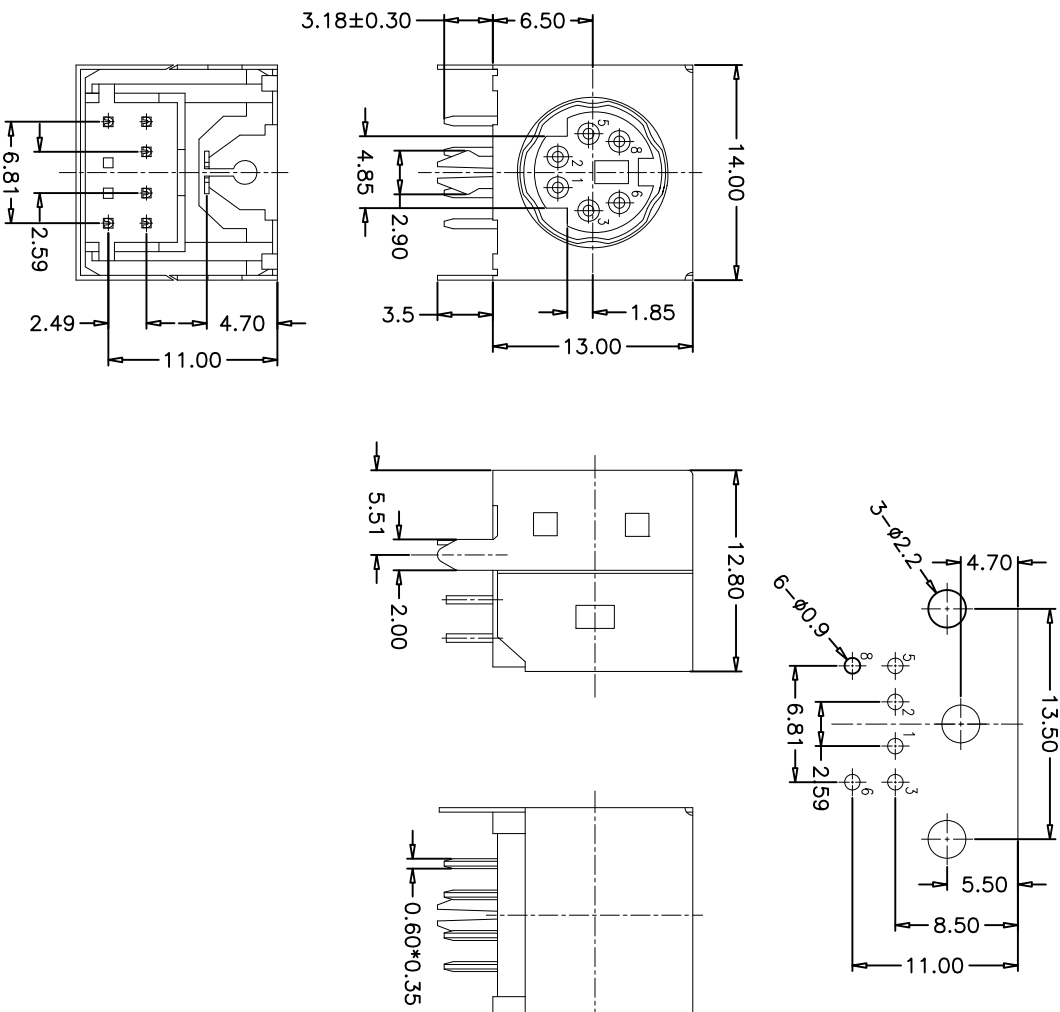
Insertion Force: 4.5K gf(44N)Max, With a Match Plug.
 Separation Force: 0.9~3.0 KgF Min, With a Match Plug.
 Durability: The Connector Must Withstand 500 Cycles For Inserting and Withdrawing With a Match Plug and no Functional Damage Happen.

Ordering Information

BT6420 6 F * C * A 1 B11

No. of Pins per Contact Type Color Insulator Insulation & Packing
 6=6Pin F=Female F=Gold Flash/Tin B=Black A:PBT+Tray
 A=10u"Gold/Tin J=15u"Gold/Tin
 K=30u"Gold/Tin S=Tin Plated

Recommended P.C.B Layout(Top Side)
 (PCB BOARD TOLERANCE±0.05)



OPERATION	X.X	±0.35	DRAW	Zhangyalin	09/01/08	SCALE	-
	X.XX	±0.25	DESIGN			UNIT	mm
	X.XXX	±0.15	CHECK	Shine		SIZE	A4
REV	DATE	MODIFICATION DESCRIPTION	CHANGE	APPROVE	APPROVE	SHEET	1/1
					CK	PART NO.	BT64206F*C*A1B11
						TITLE:	Mini Din 6 Pin Female Dip Type 90°
						PROJ.	



HSF

Recommended P.C.B Layout(Bottom Side)
(PCB BOARD TOLERANCE±0.05)

Specification:

Current Rating : 1.5 Amp.
Withstanding Voltage: AC 500V for 1 Minute.
Insulation Resistance: 1000M OHM Min,at 500V DC.
Contact Resistance: 30m ohm Max.
Operating Temperature:-55°C ~+105°C.

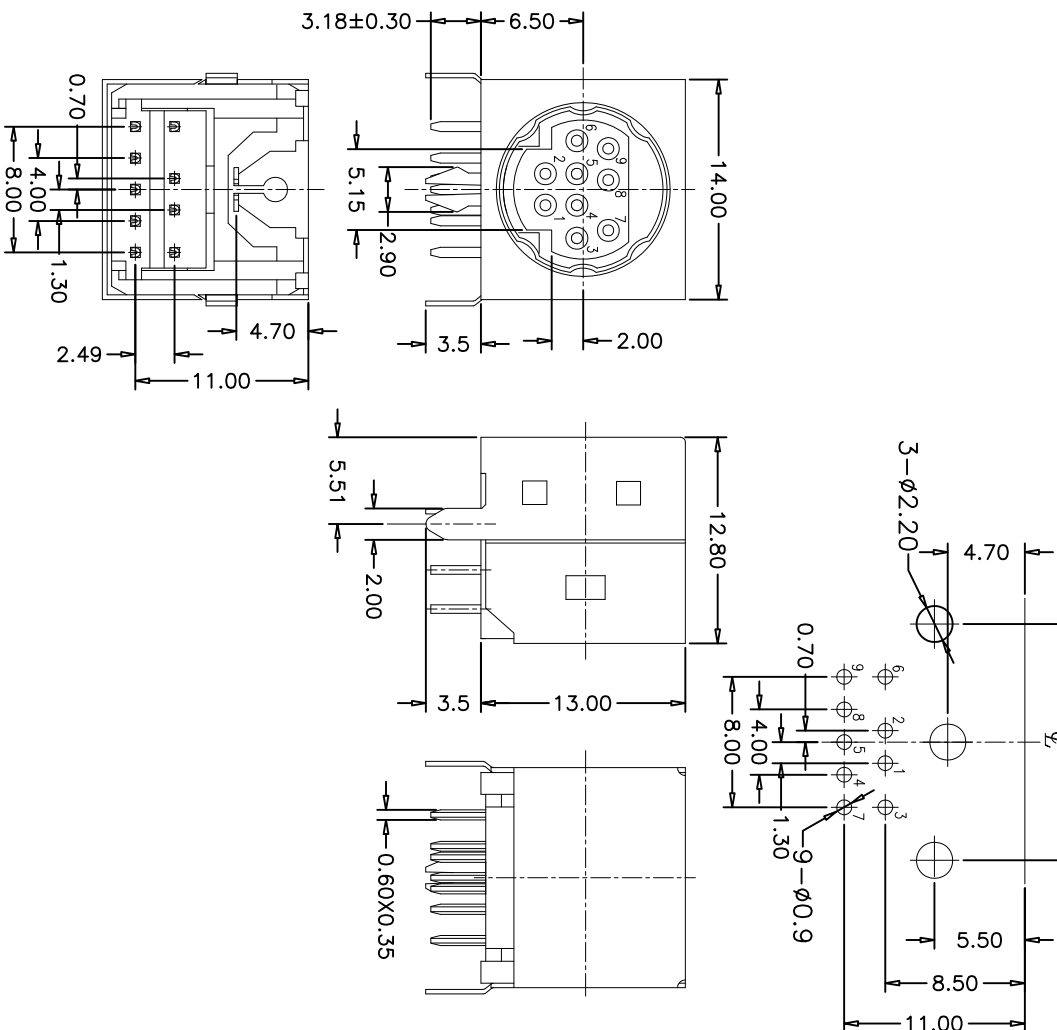
Material:

Insulator: PBT (UL94V-0).
Shield Cover: Brass(T=0.25mm), Nickel Plated.
Contact : Phosphor Bronze, Gold Flash & Tin Plated.
Insulation Color: Black.

Ordering Information

BT 6420 9 F * C * 05 B11

No. of Pins per Contact Type Contact Plating Color Insulator Series
9=9Pin F=Female F=Gold Flash/Tin B=Black S=Tin



REV	DATE	MODIFICATION DESCRIPTION	CHANGE	APPROVE	OPERATION		DRAW	SCALE	SHEET	PROJ.	TITLE:
					X.X	±0.35					
A0	09/01/18	NEW			X.XX	±0.25	DESIGN	mm	1/1		PART NO. BT64209F*C*05B11
					X.XXX	±0.15	CHECK	A4			MINI DIN 9 PIN FEMALE DIP Type 90°
					Angle	± 5°	Yalin				
					DM	TOL	CK				

